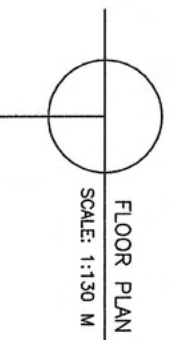
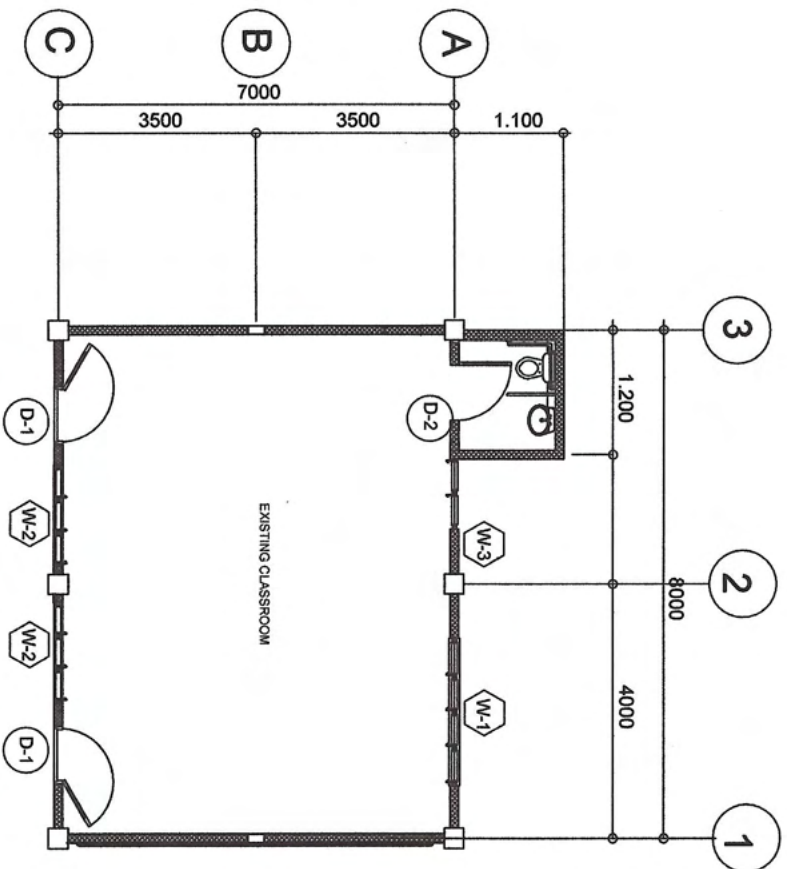
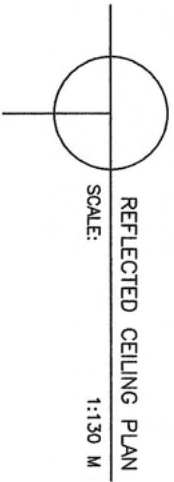


TOTAL REPLACEMENT OF EXST. SEVERE SAGGED/DECAYED/DISMANTLED BOARDS BY 1/2" X 4' X 8' MARINE PLYWOOD & PROVIDE 0.50 X 0.50 MANHOLE. REPLACE SOME PORTIONS OF INFESTED JOIST (SAME SIZE PER EXST.)



PREPARED BY :
ENGR. GENEFER H. BORJA-BESARIO
ENGINEER II

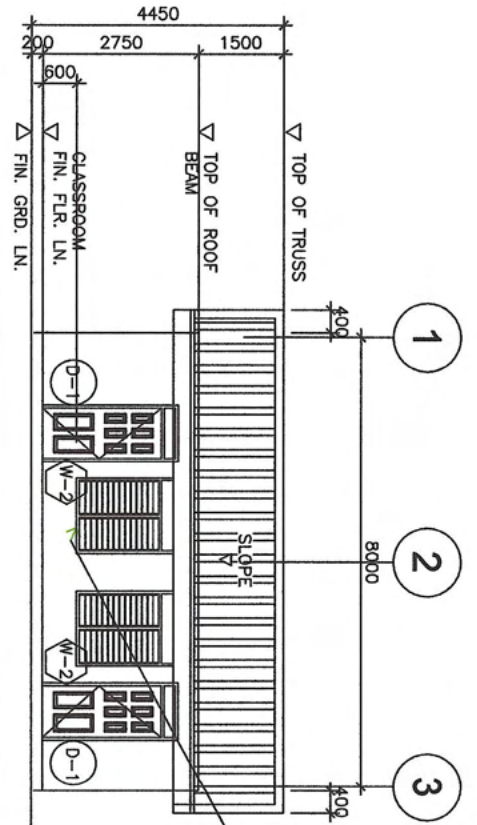
NOTED :
ENGR. VON EUGEN F. CLEOFE
ENGINEER III

NOTED :
KAREN L. GALANIDA, PHD, CESO V
Schools Division Superintendent

TITLE:
**OROK ELEMENTARY SCHOOL
(BUILDING 3)**

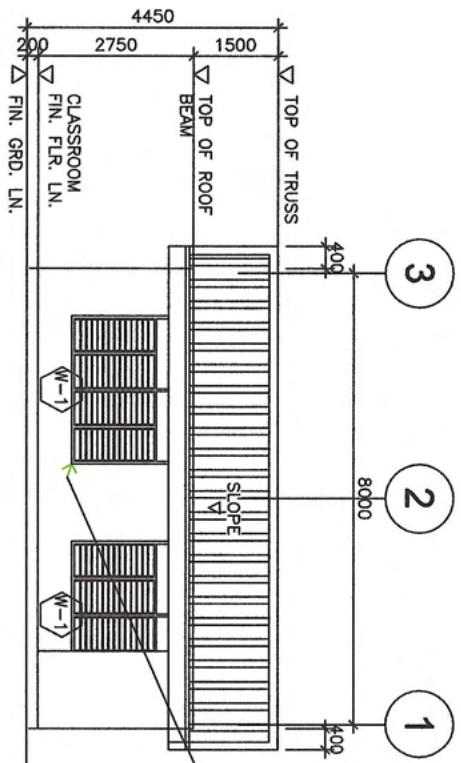
SHEET CONTENTS :
**FRONT SIDE ELEVATION
REAR SIDE ELEVATION**

SHEET NO.
02



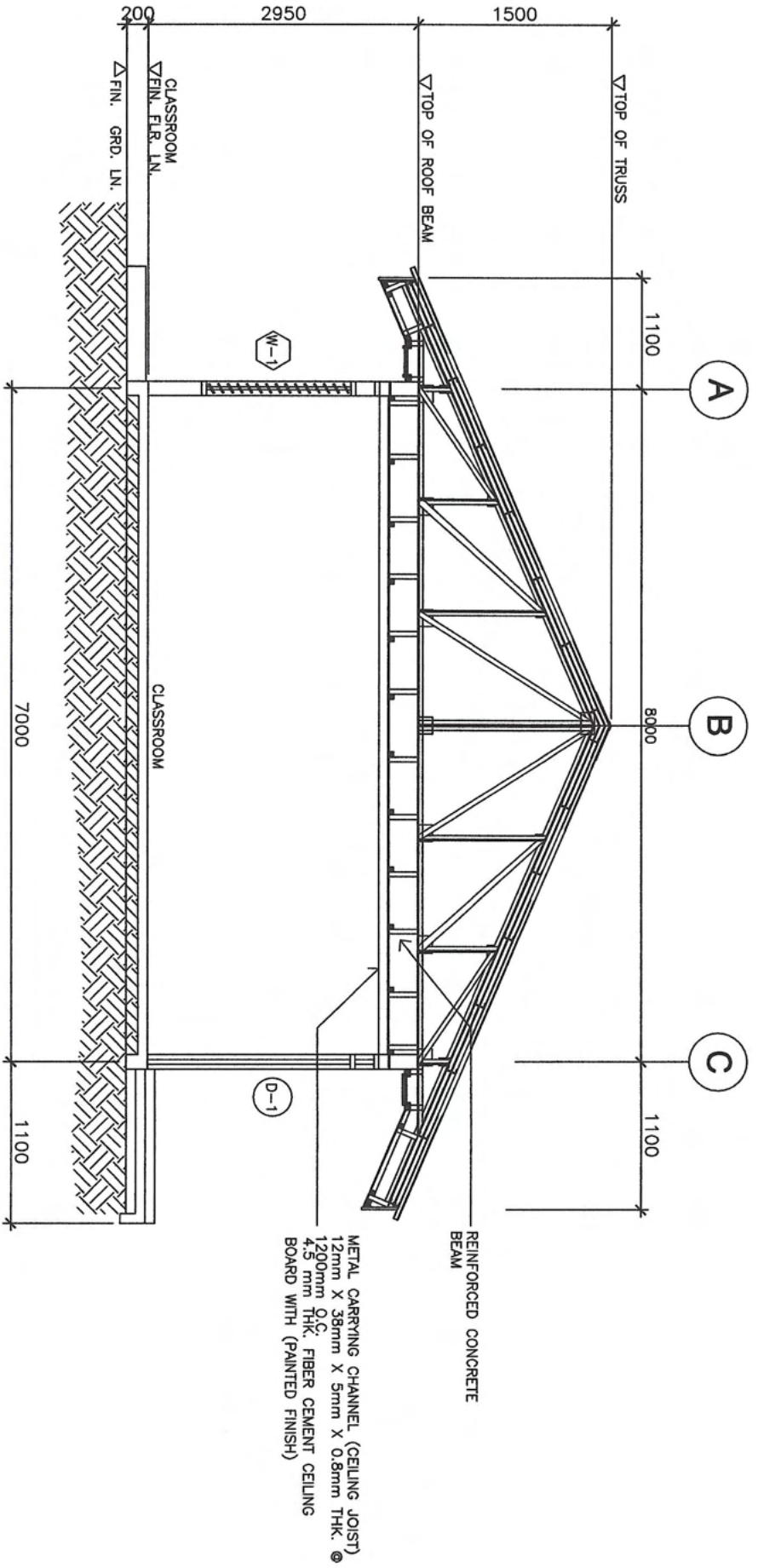
REPLACE EXST. BROKEN/DAMAGED JALOUSIE GLASS AND ALUMINUM FRAME BY SHUTTER TYPE WINDOW JALOUSIE HOLDER FRAME W/ CLEAR GLASS BLADES AND W/ FIXED GLASS TRANSOM. REPLACE HEAVILY INFESTED PORTION OF WINDOW JAMB 0.05 m X 0.15 m.

FRONT SIDE ELEVATION
SCALE : 1:130M



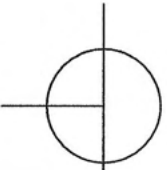
REPLACE EXST. BROKEN/DAMAGED JALOUSIE GLASS AND ALUMINUM FRAME BY SHUTTER TYPE WINDOW JALOUSIE HOLDER FRAME W/ CLEAR GLASS BLADES AND W/ FIXED GLASS TRANSOM. REPLACE HEAVILY INFESTED PORTION OF WINDOW JAMB 0.05 m X 0.15 m.

REAR SIDE ELEVATION
SCALE : 1:130M



DETAILED CROSS SECTION

SCALE
1:130M



PREPARED BY :

ENGR. GENEFER H. BORJA-BESARIO
 ENGINEER II


 ENGR. VON EUGENE F. CLEOFE
 ENGINEER III

NOTED :

KAREN L. GALANIDA, PH.D., CESO V
 Schools Division Superintendent

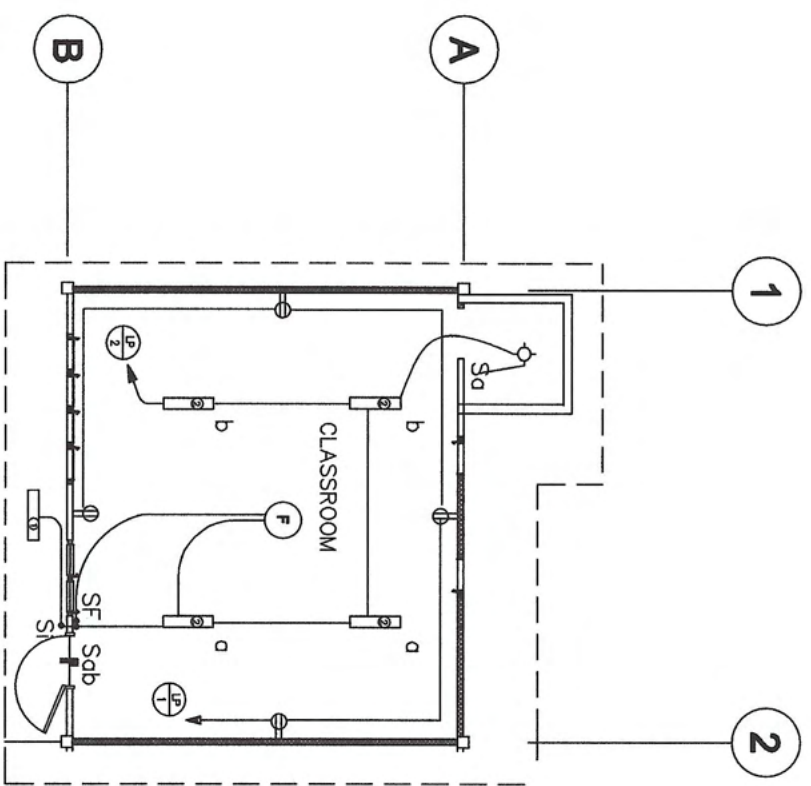
TITLE:

**OROK ELEMENTARY SCHOOL
 (BUILDING 3)**

SHEET CONTENTS :

DETAILED CROSS SECTION

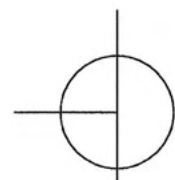
SHEET NO.
03





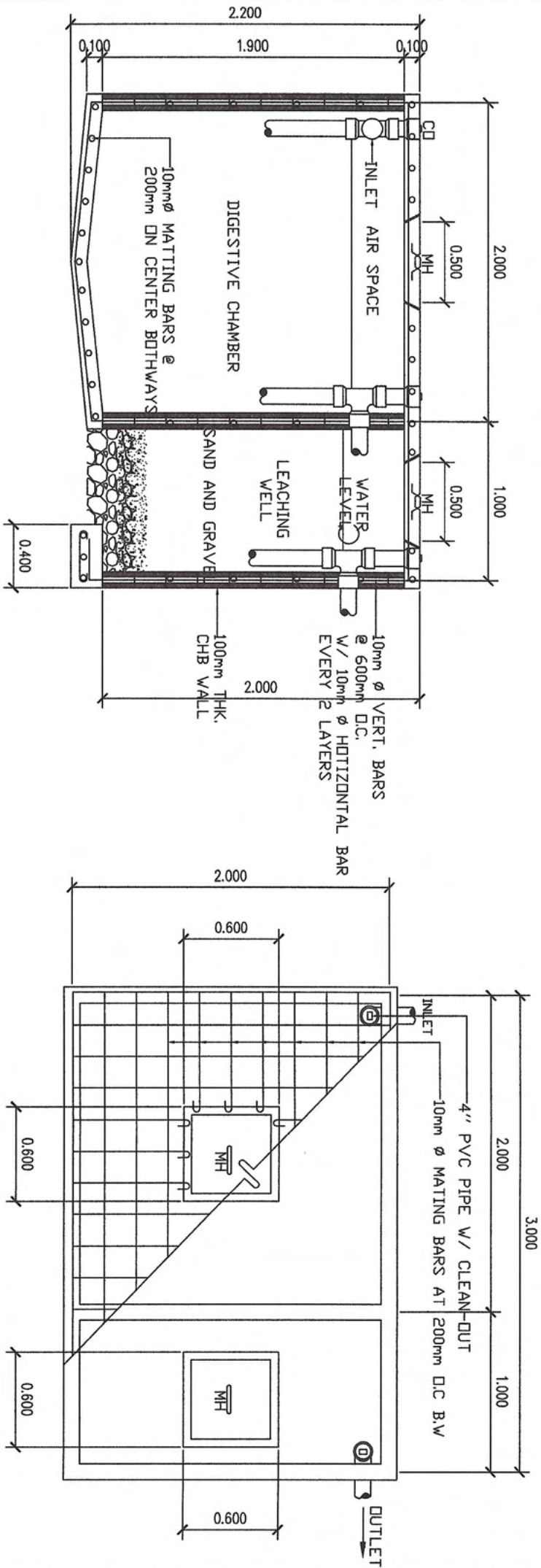
SYMBOL	DESCRIPTION
	CEILING LIGHT OUTLET WITH COMPACT FLUORESCENT LAMP
	2 x 40 WATTS FLUORESCENT LAMP OR 2 x 36 WATTS FLUORESCENT LAMP(T5)
	1 x 40 WATTS FLUORESCENT LAMP OR 1 x 36 WATTS FLUORESCENT LAMP(T5)
	CEILING FAN OUTLET
	ONE GANG DEVICE SWITCH
	TWO GANG DEVICE SWITCH
	FAN CONTROL SWITCH
	RACEWAY CONDUIT CONCEALED IN CEILING
	PANELBOARD, MARKED AS "LP"
	TAMPERS PROOF DUPLEX CONVENIENCE OUTLE
	GROUNDING TYPE 16 AMPS, 250 VOLT WITH MODERN PLATE COVER
	CIRCUIT HOMERUN

LIGHTING AND POWER LAYOUT

SCALE 1:130M

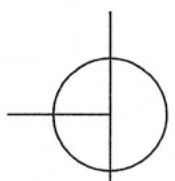


 DepEd DIVISION OFFICE EDUCATIONAL FACILITIES DIVISION Marikina Avenue, Marikina City	PREPARED BY : ENGR. GENEFER H. BORJA-BESARIO ENGINEER II	NOTED :  ENGR. VON EUGENE F. CLEOFE ENGINEER III	TITLE: OROK ELEMENTARY SCHOOL (BUILDING 3)	SHEET CONTENTS : LIGHTING AND POWER LAYOUT	SHEET NO. <div style="border: 1px solid black; border-radius: 50%; width: 40px; height: 40px; display: flex; align-items: center; justify-content: center; margin: 0 auto;"> 04 </div>
---	---	--	--	--	--



SEPTIC TANK DETAILED CROSS SECTION

SCALE 1:130M



PREPARED BY :
ENGR. GENEFER H. BORJA-BESARIO
 ENGINEER II

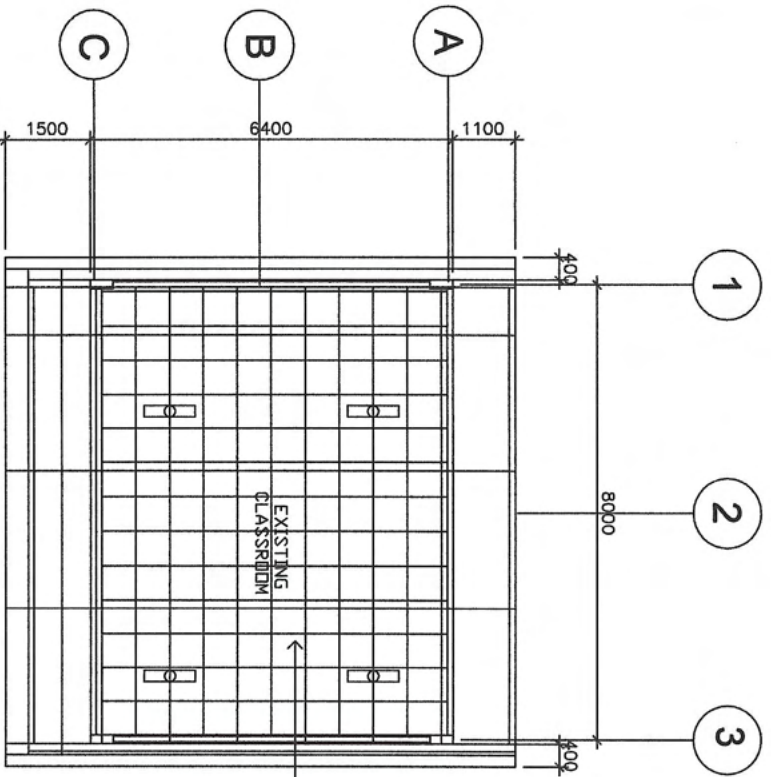
NOTED :
ENGR. VON EUGENE F. ZLEOFE
 ENGINEER III

KAREN L. GALANIDA, PHD, CESO V
 Schools Division Superintendent

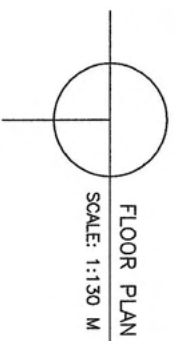
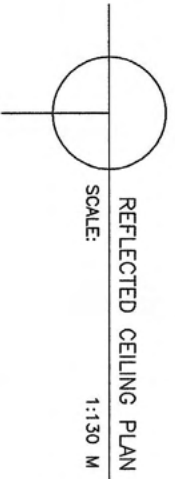
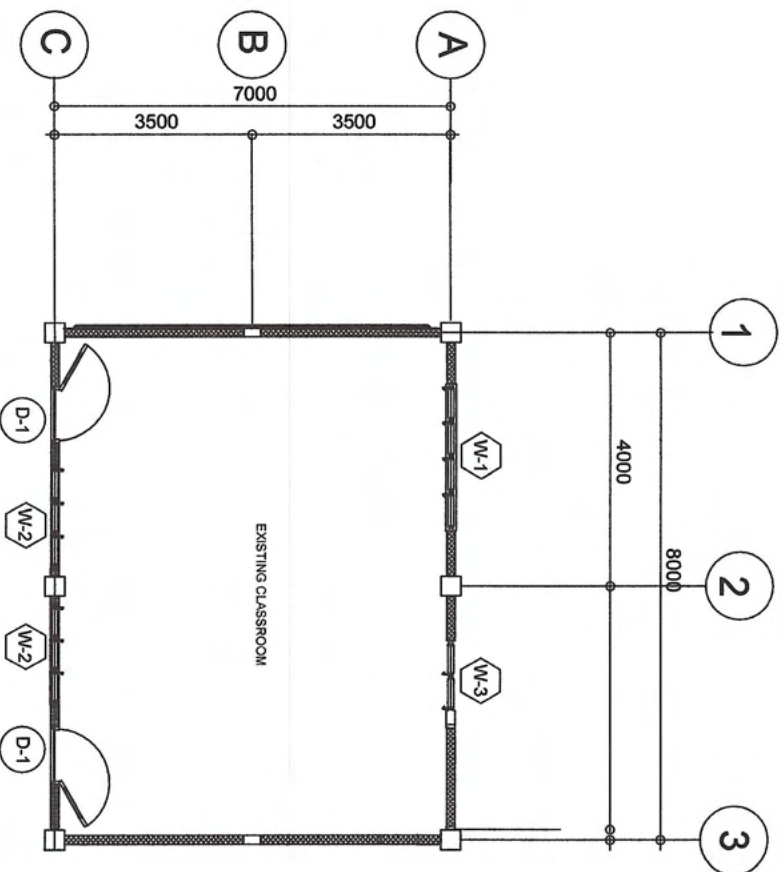
TITLE:
OROK ELEMENTARY SCHOOL
 (BUILDING 3)

SHEET CONTENTS :
SEPTIC TANK DETAILED
CROSS SECTION

SHEET NO.
05



TOTAL REPLACEMENT OF EXST. SEVERE SAGED/DECAYED/DISMANTLED BOARDS BY 1/2" X 4' X 8' MARINE PLYWOOD & PROVIDE 0.50 X 0.50 MANHOLE. REPLACE SOME PORTIONS OF INFESTED JOIST (SAME SIZE PER EXST.)



PREPARED BY :

ENGR. GENEFER H. BORJA-BESARIO
ENGINEER II

NOTED :

ENGR. VON EUGENE F. CLEOFFE
ENGINEER III

KAREN L. GALAMIDA, PHD, CESO V
Schools Division Superintendent

TITLE:

OROK ELEMENTARY SCHOOL
(BUILDING 4)

SHEET CONTENTS :

FLOOR PLAN
REFLECTED CEILING PLAN

SHEET NO.

01

PREPARED BY :

ENGR. GENEFER H. BORJA-BESARIO
 ENGINEER II

NOTED :

ENGR. VONTEUGENE F. CLEOFE
 ENGINEER III

KAREN L. GALANIDA, PHD, CESO V
 Schools Division Superintendent

TITLE :

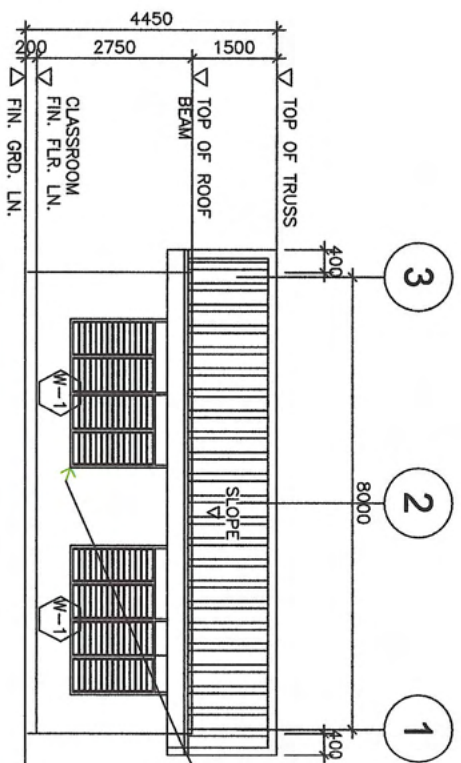
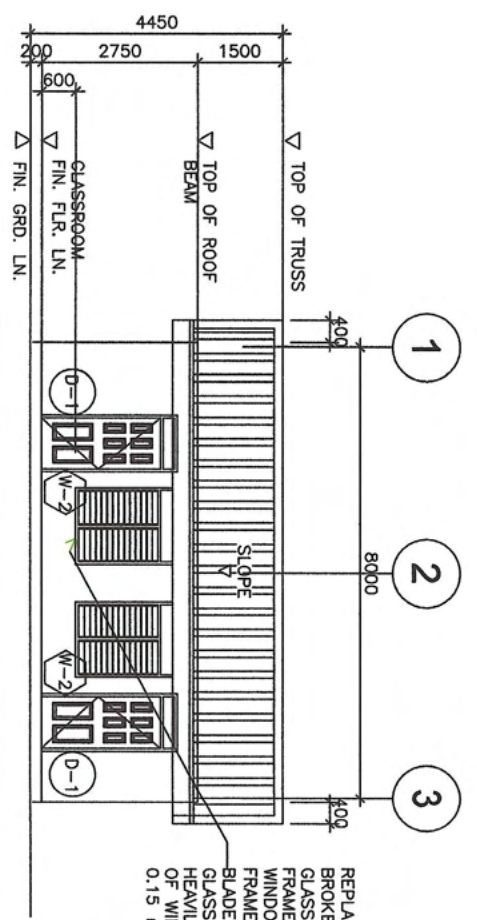
**OROK ELEMENTARY SCHOOL
 (BUILDING 4)**

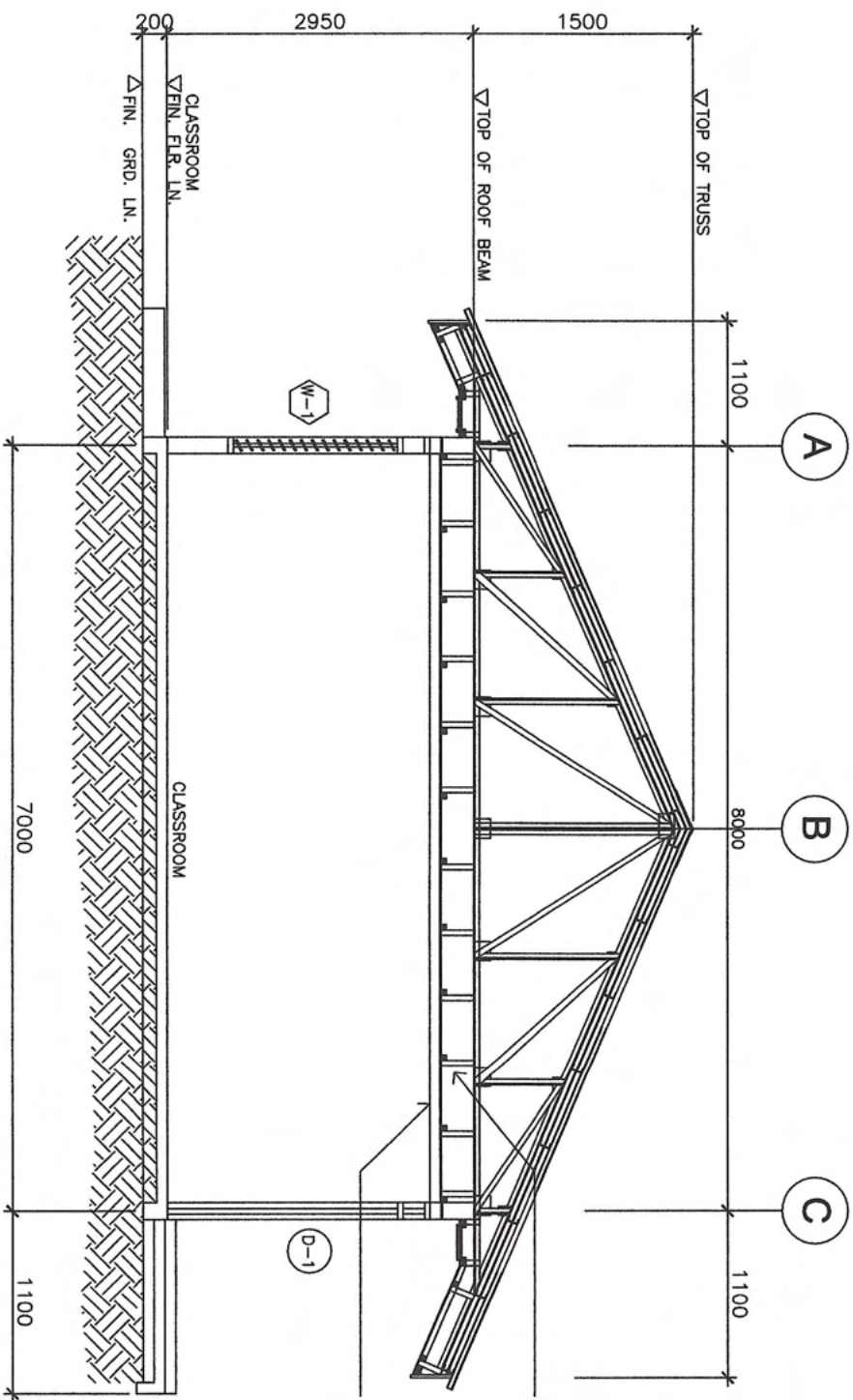
SHEET CONTENTS :

**FRONT SIDE ELEVATION
 REAR SIDE ELEVATION**

SHEET NO.

02

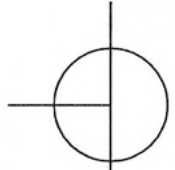




REINFORCED CONCRETE BEAM

METAL CARRYING CHANNEL (CEILING JOIST)
 12mm X 38mm X 5mm X 0.8mm THK. ©
 1200mm O.C.
 4.5 mm THK. FIBER CEMENT CEILING BOARD WITH (PAINTED FINISH)

DETAILED CROSS SECTION
 SCALE 1:130M



PREPARED BY:
ENGR. GENEFER H. BORJA-BESARIO
 ENGINEER II

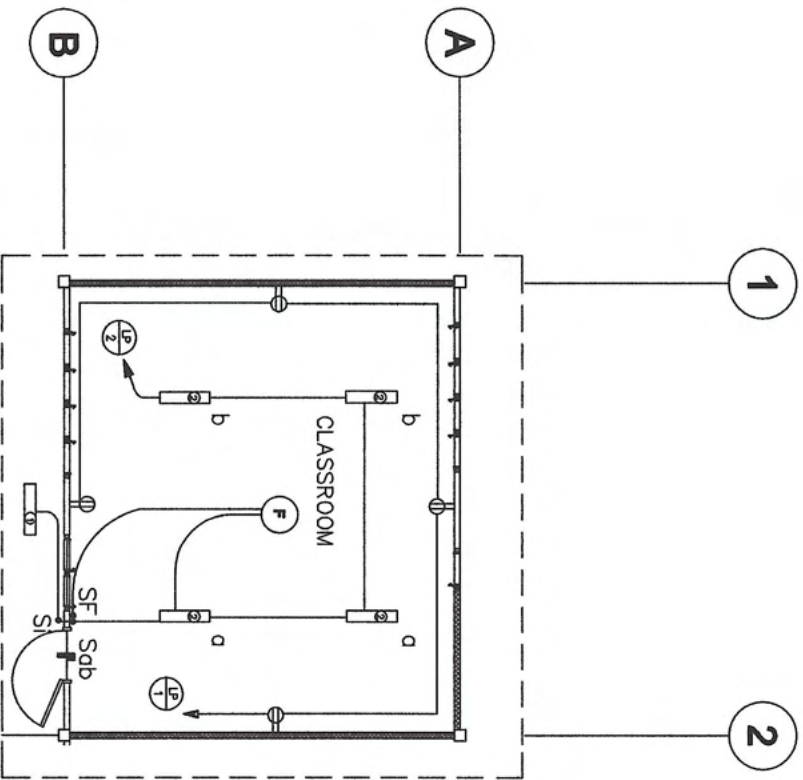
NOTED:
ENGR. VON EUGENE F. CLEOFE
 ENGINEER III

NOTED:
KAREN L. GALANIDA, PHD, CESO V
 Schools Division Superintendent

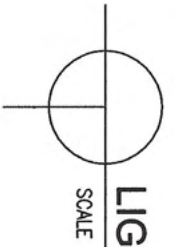
TITLE:
**OROK ELEMENTARY SCHOOL
 (BUILDING 4)**

SHEET CONTENTS:
DETAILED CROSS SECTION

SHEET NO.
03



SYMBOL	DESCRIPTION
	CEILING LIGHT OUTLET WITH COMPACT FLUORESCENT LAMP
	2 x 40 WATTS FLUORESCENT LAMP OR 2 x 36 WATTS FLUORESCENT LAMP(TS)
	1 x 40 WATTS FLUORESCENT LAMP OR 1 x 36 WATTS FLUORESCENT LAMP(TS)
	CEILING FAN OUTLET
	ONE GANG DEVICE SWITCH
	TWO GANG DEVICE SWITCH
	FAN CONTROL SWITCH
	RACEWAY CONDUIT CONCEALED IN CEILING
	PANELBOARD, MARKED AS "LP"
	TAMPERED PROOF DUPLEX CONVENIENCE OUTLE
	GROUNDING TYPE 16 AMPS, 250 VOLT WITH MODERN PLATE COVER
	CIRCUIT HOMERUN



LIGHTING AND POWER LAYOUT

SCALE
1:130M

PREPARED BY :

ENGR. GENEFER H. BORJA-BESARIO
ENGINEER II

NOTED :

ENGR. VON EGENE F. CLEOFE
ENGINEER III

KAREN L. GALANIDA, PH.D. CESO V
Schools Division Superintendent

TITLE :

OROK ELEMENTARY SCHOOL
(BUILDING 4)

SHEET CONTENTS :

LIGHTING AND POWER LAYOUT

SHEET NO.

04