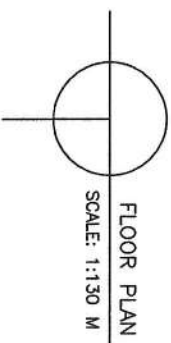
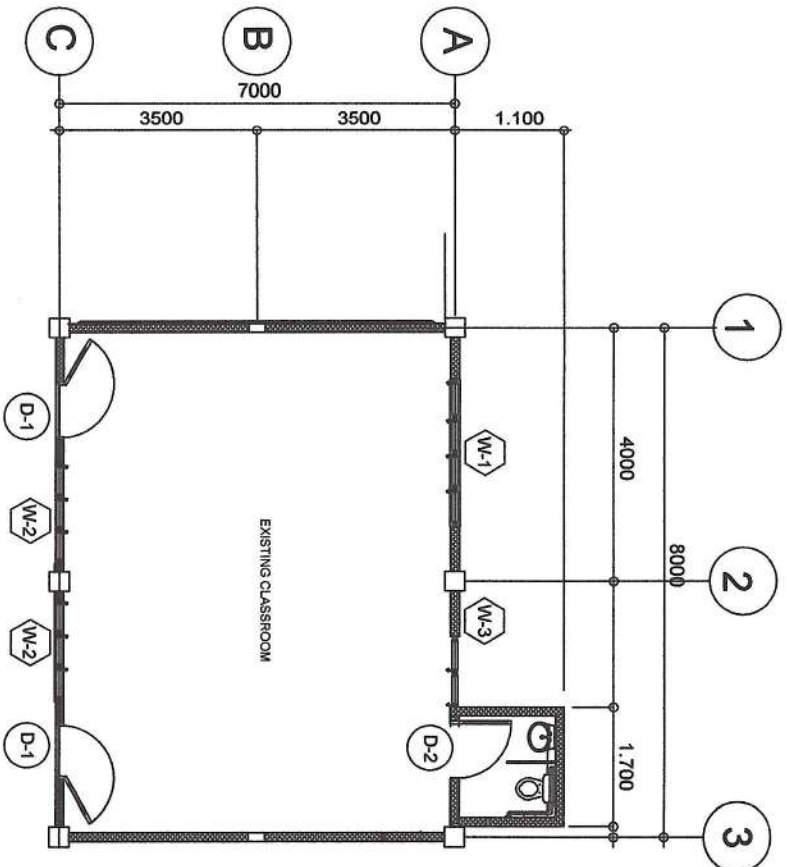
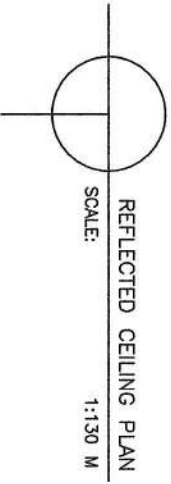


TOTAL REPLACEMENT OF EXST. SEVERE SAGGED/DECAYED/DISMANTLED BOARDS BY 1/2" X 4' X 8' MARINE PLYWOOD & PROVIDE 0.50 X 0.50 MANHOLE. REPLACE SOME PORTIONS OF INFESTED JOIST (SAME SIZE PER EXST.)



PREPARED BY :

ENGR. GENEFER H. BORJA-BESARIO
ENGINEER II

NOTED :

ENGR. VON EUGENIE F. CLEOFE
ENGINEER III

KAREN L. GALANIDA, PHD, CESO V
Schools Division Superintendent

TITLE :

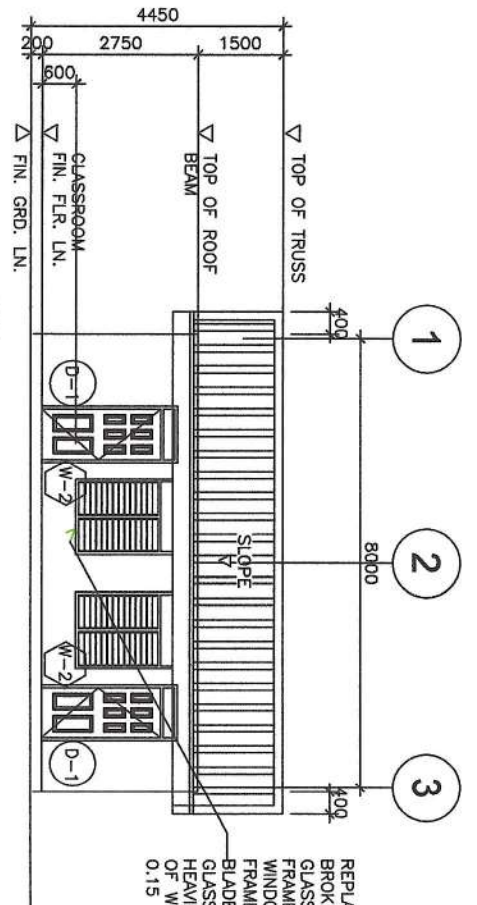
**SERNA ELEMENTARY SCHOOL
(BUILDING 1)**

SHEET CONTENTS :

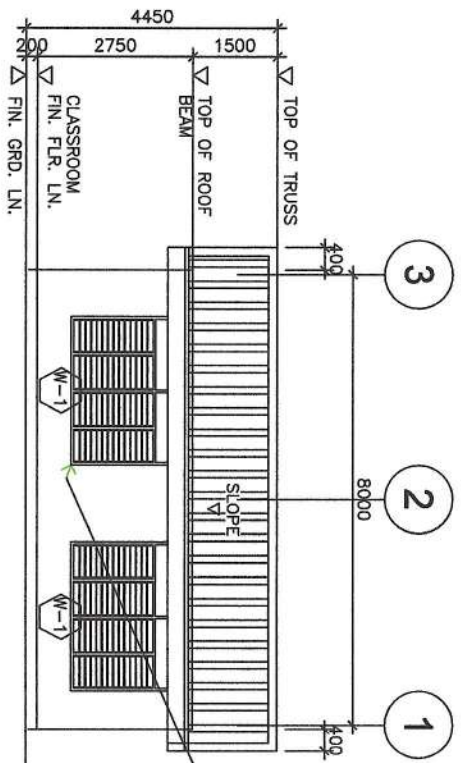
**FRONT SIDE ELEVATION
REAR SIDE ELEVATION**

SHEET NO.

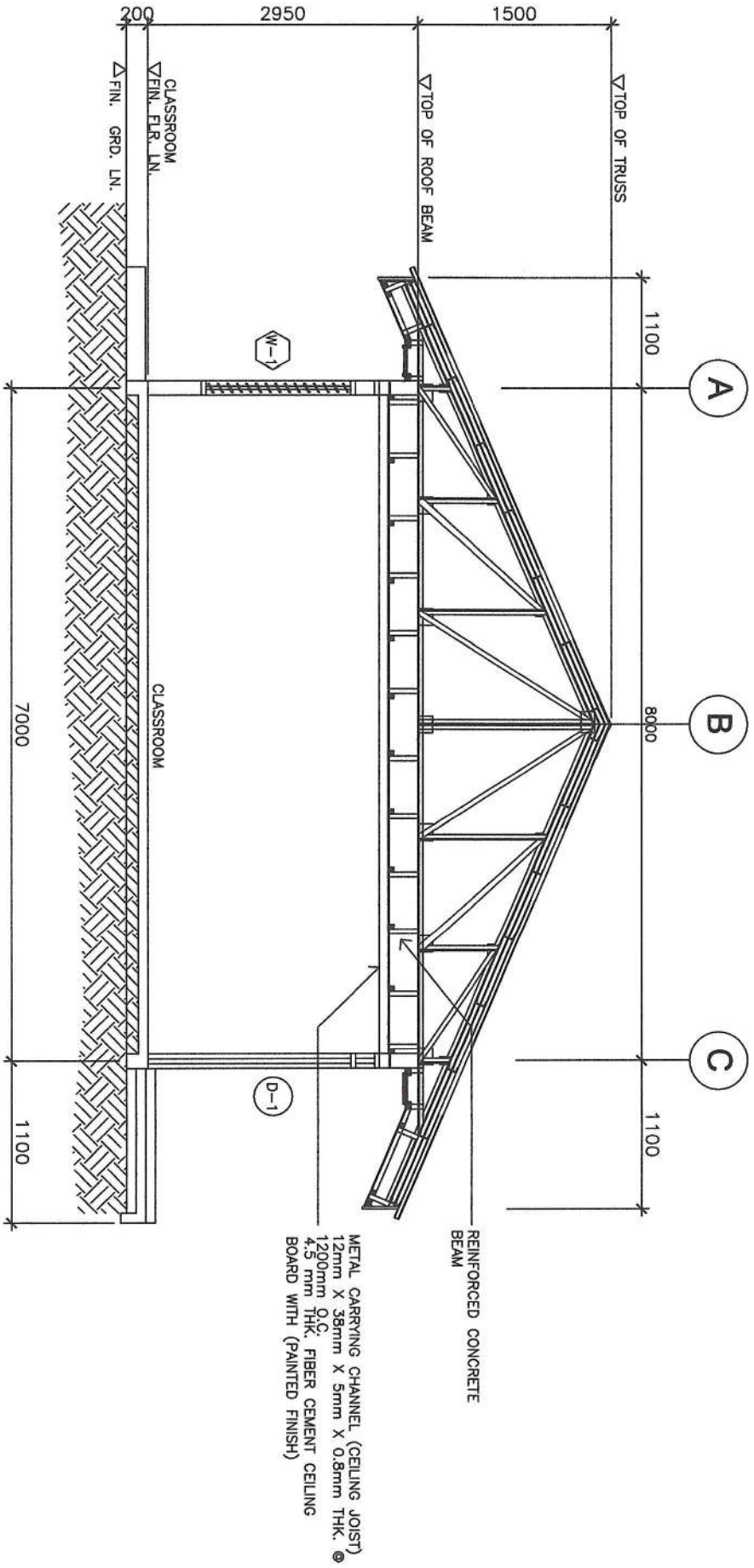
02



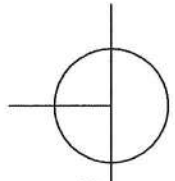
REPLACE EXST.
BROKEN/DAMAGED JALOUSIE
GLASS AND ALUMINUM
FRAME BY SHUTTER TYPE
WINDOW JALOUSIE HOLDER
FRAME W/ CLEAR GLASS
BLADES AND W/ FIXED
GLASS TRANSOM. REPLACE
HEAVILY INFESTED PORTION
OF WINDOW JAMB 0.05 m X
0.15 m.



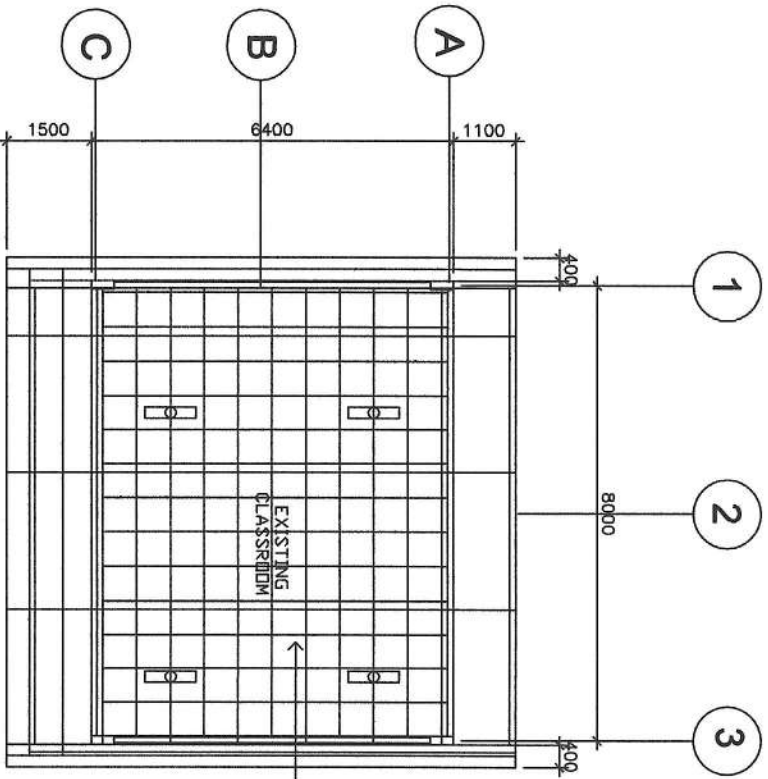
REPLACE EXST. BROKEN/DAMAGED
JALOUSIE GLASS AND ALUMINUM
FRAME BY SHUTTER TYPE WINDOW
JALOUSIE HOLDER FRAME W/ CLEAR
GLASS BLADES AND W/ FIXED GLASS
TRANSOM. REPLACE HEAVILY
INFESTED PORTION OF WINDOW JAMB
0.05 m X 0.15 m.



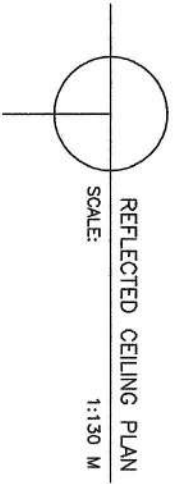
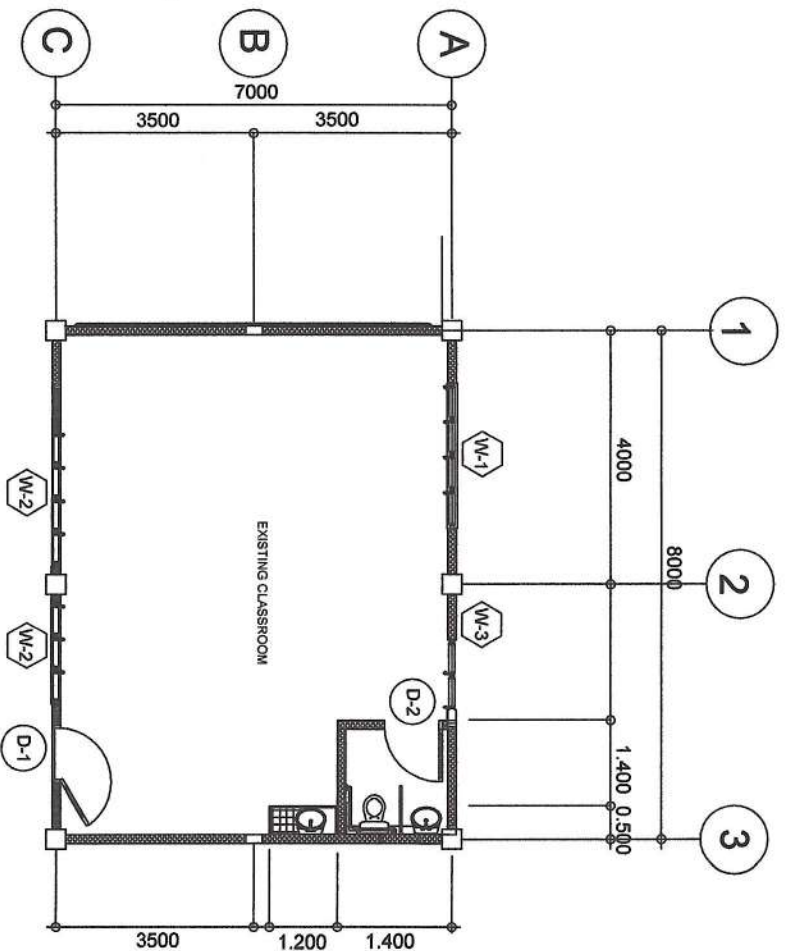
DETAILED CROSS SECTION
 SCALE
 1:1.30M



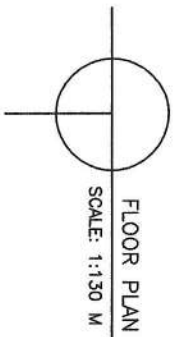
| | | | | | |
|---|---|---|---|---|------------------------|
| <p> DepEd DIVISION OFFICE EDUCATIONAL FACILITIES DIVISION Mendoc Avenue, Parag City, Marikina City </p> | PREPARED BY : ENGR. GENEFER H. BORJA-BESARIO ENGINEER II | NOTED : ENGR. VON EUGENIE F. CLEOFE ENGINEER III | TITLE: SERNA ELEMENTARY SCHOOL (BUILDING 1) | SHEET CONTENTS : DETAILED CROSS SECTION | SHEET NO. 03 |
|---|---|---|---|---|------------------------|



TOTAL REPLACEMENT OF EXST. SEVERE SAGGED/DECAYED/DISMANTLED BOARDS BY $\frac{3}{4}$ " X 4' X 8" MARINE PLYWOOD & PROVIDE 0.50 X 0.50 MANHOLE. REPLACE SOME PORTIONS OF INFESTED JOIST (SAME SIZE PER EXST.)



REFLECTED CEILING PLAN
SCALE: 1:130 M



FLOOR PLAN
SCALE: 1:130 M

PREPARED BY:
ENGR. GENEFER H. BORJA-BESARIO
 ENGINEER II

NOTED:

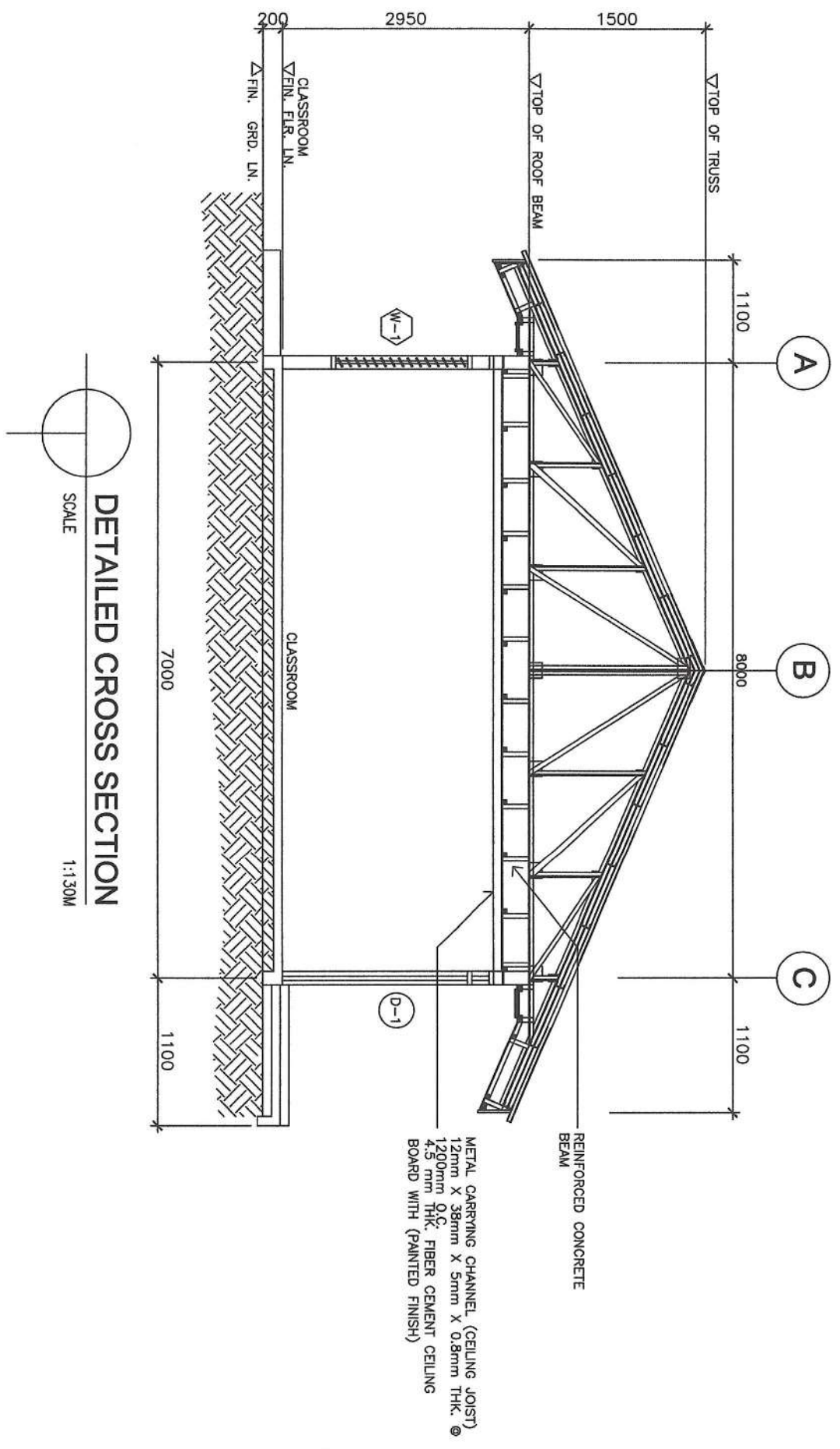
ENGR. VON EUGENE F. CLEOFE
 ENGINEER III

NOTED:
KAREN L. GALANIDA, PHD, CESO V
 Schools Division Superintendent

TITLE:
**SERNA ELEMENTARY SCHOOL
 (BUILDING 4)**

SHEET CONTENTS:
DETAILED CROSS SECTION

SHEET NO.
03



PREPARED BY :

ENGR. GENEFER H. BORJA-BESARIO
ENGINEER II

NOTED :

[Signature]
ENGR. VON EUGENE F. GLEOFE
ENGINEER III

KAREN L. GALANDIA, PHD, CESO V
Schools Division Superintendent

TITLE :

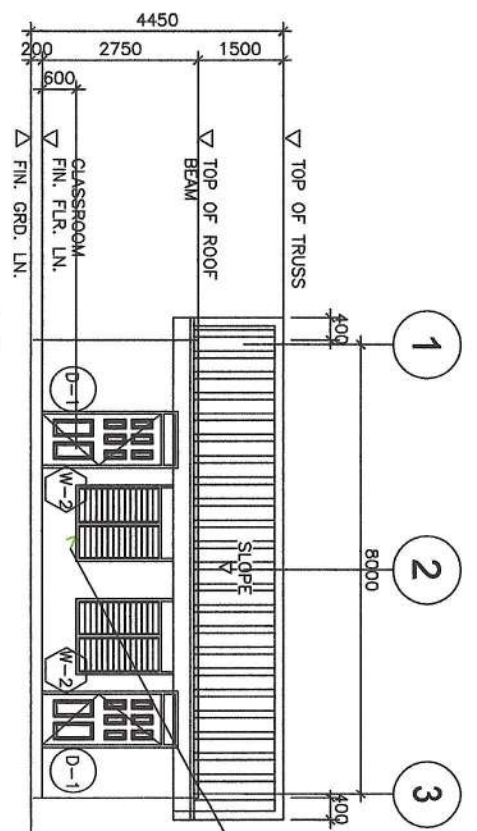
**SERNA ELEMENTARY SCHOOL
(BUILDING 4)**

SHEET CONTENTS :

**FRONT SIDE ELEVATION
REAR SIDE ELEVATION**

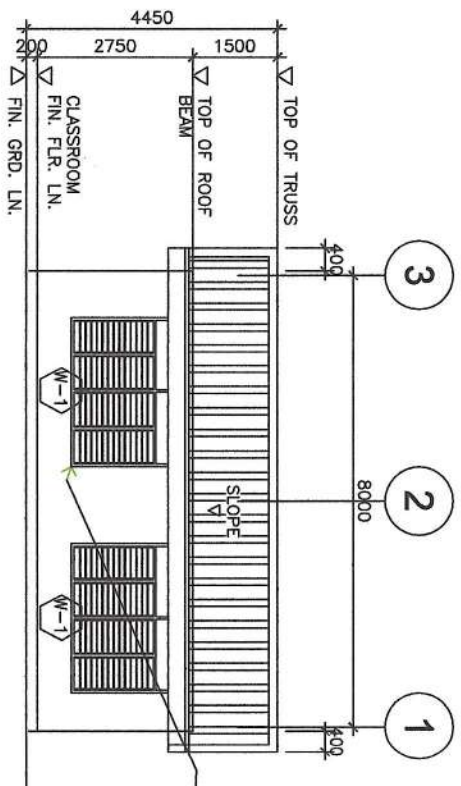
SHEET NO.

02



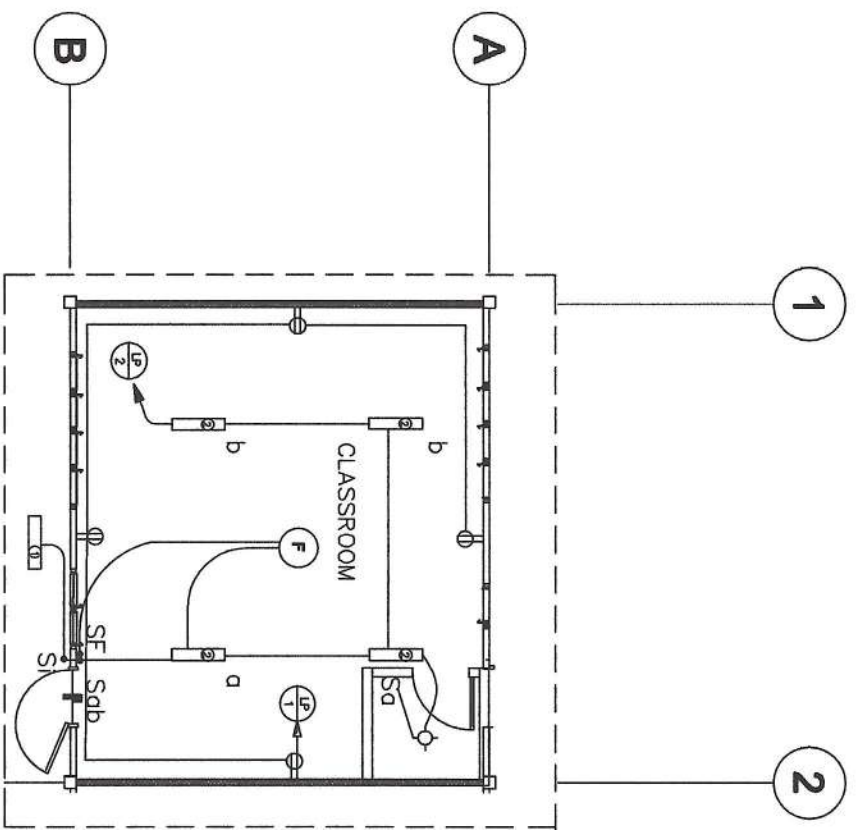
REPLACE EXST.
BROKEN/DAMAGED JALOUSIE
GLASS AND ALUMINIUM
FRAME BY SHUTTER TYPE
WINDOW JALOUSIE HOLDER
FRAME W/ CLEAR GLASS
BLADES AND W/ FIXED
GLASS TRANSOM. REPLACE
HEAVILY INFESTED PORTION
OF WINDOW JAMB 0.05 m X
0.15 m.

FRONT SIDE ELEVATION
SCALE : 1:130M



REPLACE EXST. BROKEN/DAMAGED
JALOUSIE GLASS AND ALUMINIUM
FRAME BY SHUTTER TYPE WINDOW
JALOUSIE HOLDER FRAME W/ CLEAR
GLASS BLADES AND W/ FIXED GLASS
TRANSOM. REPLACE HEAVILY
INFESTED PORTION OF WINDOW JAMB
0.05 m X 0.15 m.

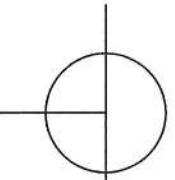
REAR SIDE ELEVATION
SCALE : 1:130M



| SYMBOL | DESCRIPTION |
|--------|--|
| | CEILING LIGHT OUTLET WITH COMPACT FLUORESCENT LAMP |
| | 2 x 40 WATTS FLUORESCENT LAMP |
| | OR 2 x 36 WATTS FLUORESCENT LAMP(T5) |
| | 1 x 40 WATTS FLUORESCENT LAMP |
| | OR 1 x 36 WATTS FLUORESCENT LAMP(T5) |
| | CEILING FAN OUTLET |
| | ONE GANG DEVICE SWITCH |
| | TWO GANG DEVICE SWITCH |
| | FAN CONTROL SWITCH |
| | RACEWAY CONDUIT CONCEALED IN CEILING |
| | PANELBOARD, MARKED AS "LP" |
| | TAMPERED PROOF DUPLEX CONVENIENCE OUTLE |
| | GROUNDING TYPE 16 AMPS, 250 VOLT WITH MODERN PLATE COVER |
| | CIRCUIT HOMERUN |

LIGHTING AND POWER LAYOUT

SCALE 1:1.30M



PREPARED BY :
ENGR. GENEFER H. BORJA-BESARIO
 ENGINEER II

NOTED :

ENGR. VON EUGENIO F. CLEOFE
 ENGINEER III

NOTED :
KAREN L. GALANIDA, PHD, CESO V
 Schools Division Superintendent

TITLE:
SERNA ELEMENTARY SCHOOL
(BUILDING 4)

SHEET CONTENTS :
LIGHTING AND POWER LAYOUT

SHEET NO.
04